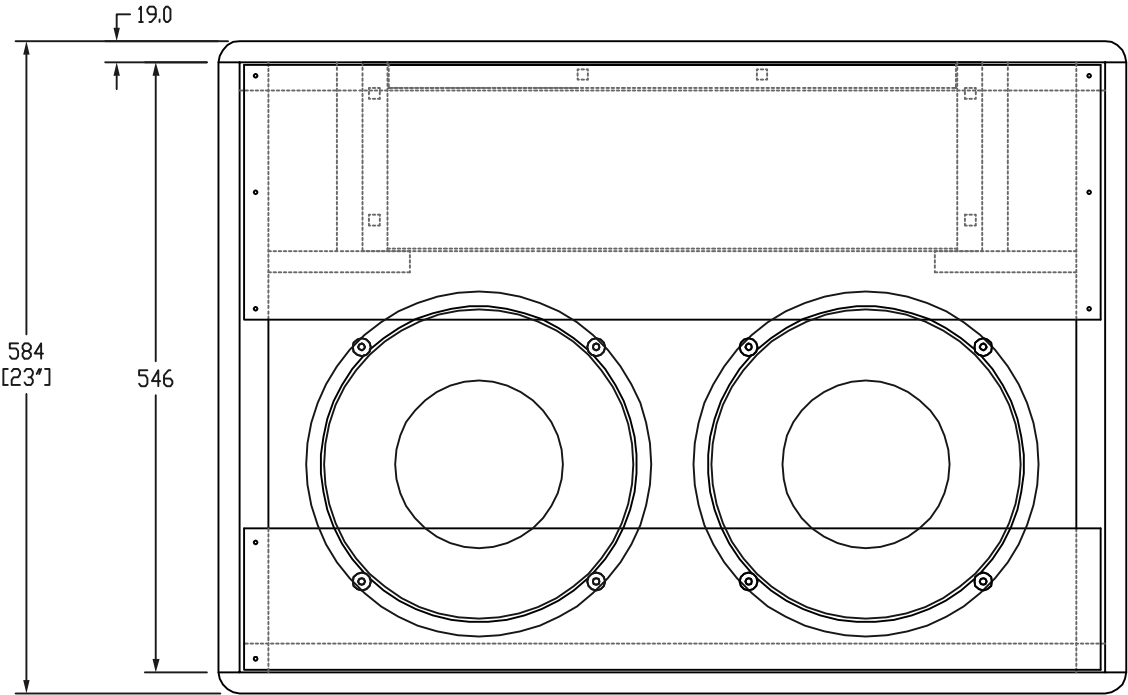
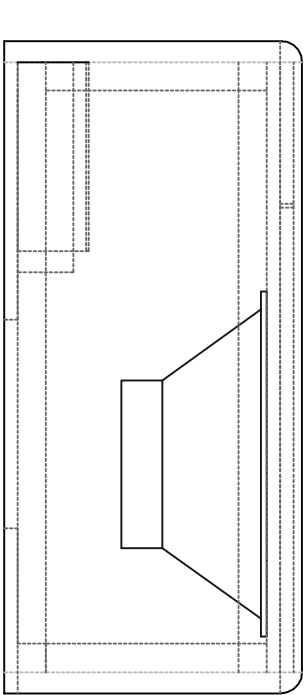
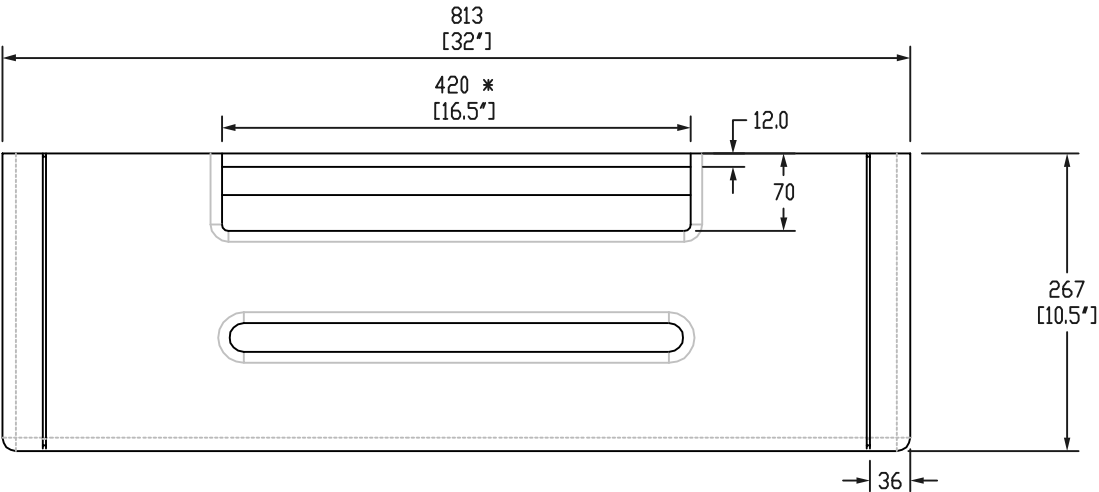
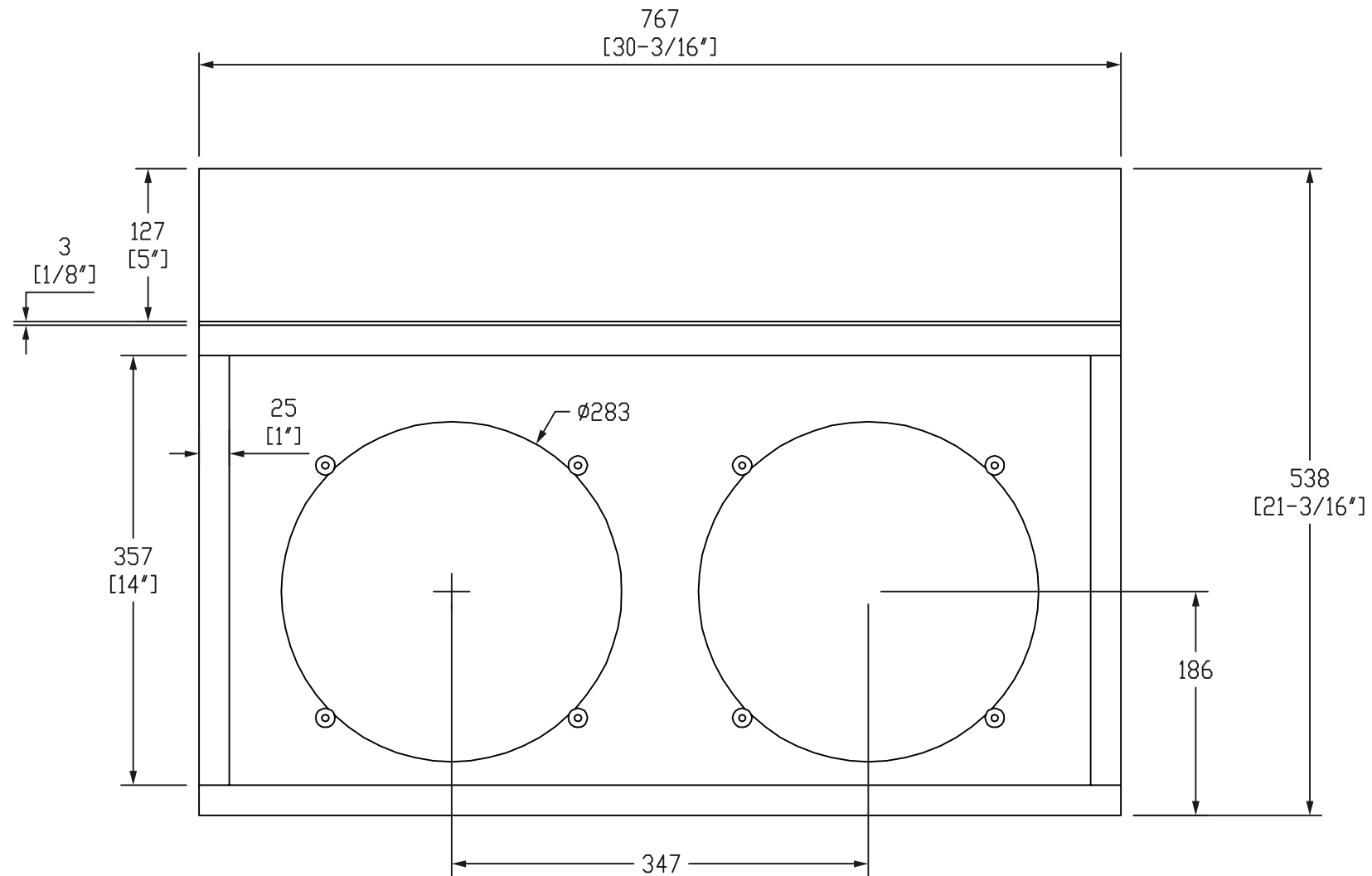


* CUT OUT FOR TREM VERSION IS WIDER
POSSIBLY 500MM?



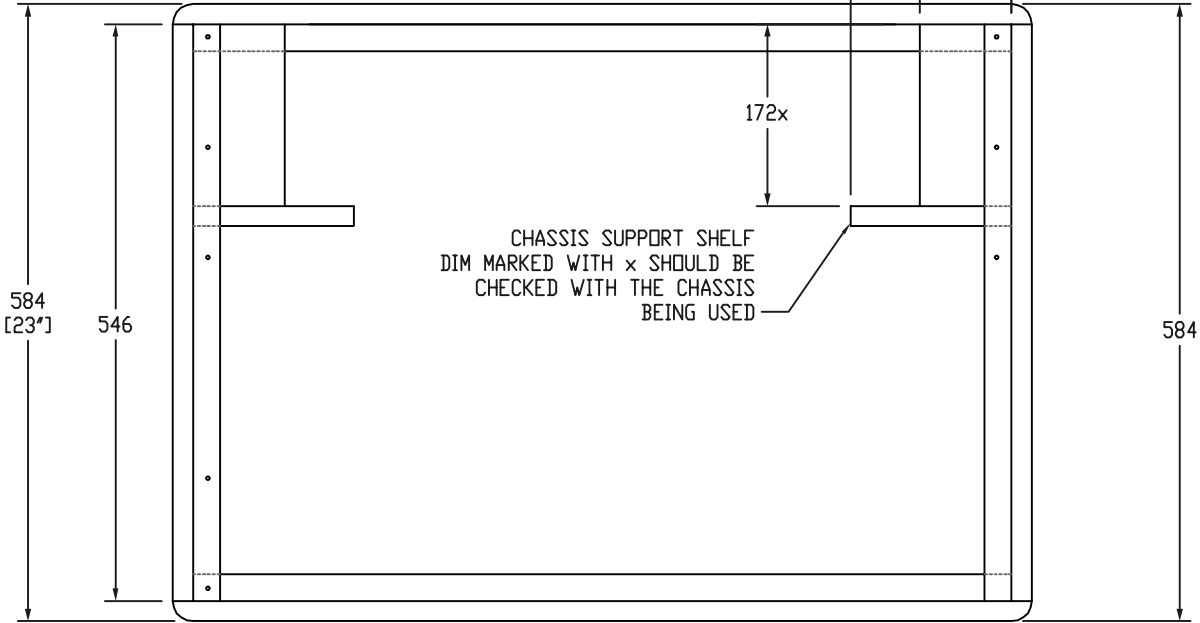
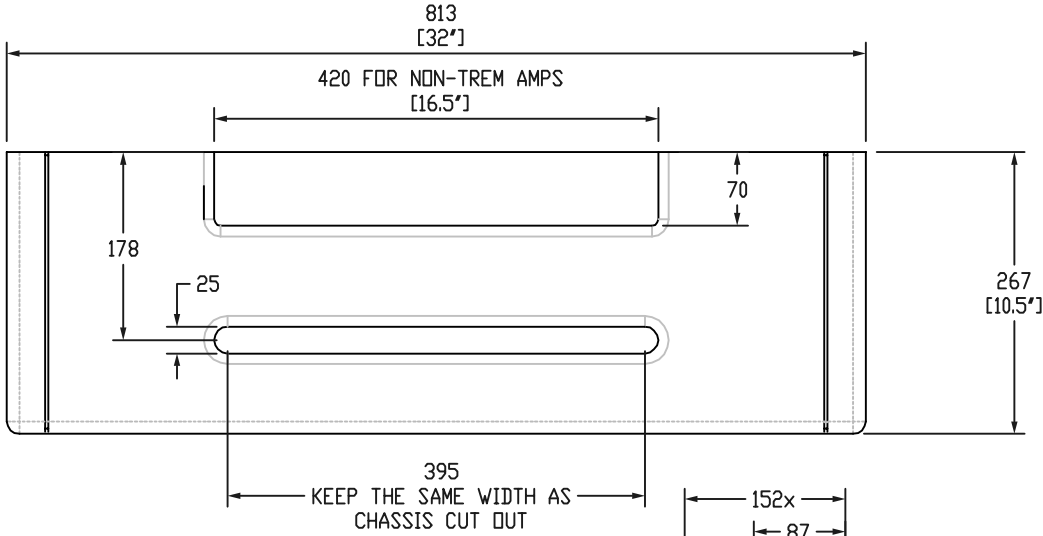
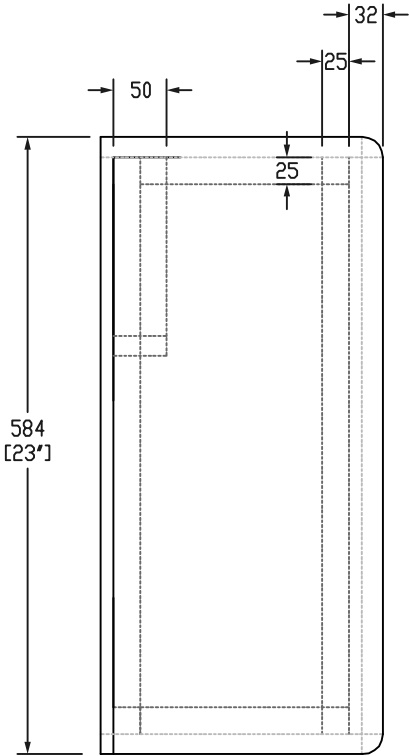
		3rd ANGLE PROJ	THIS DRAWING IS THE PROPERTY OF MODULUS AMPLIFICATION AND MUST NOT BE REPRODUCED OR LOANED WITHOUT WRITTEN PERMISSION	
TITLE		FINAL ASSY BLUESBREAKER COMBO	DRAWN BY - M.MORTIMER DATE - 20/11/08	
MATERIAL	SEE DETAILS	BB45-1	ISSUE	01X



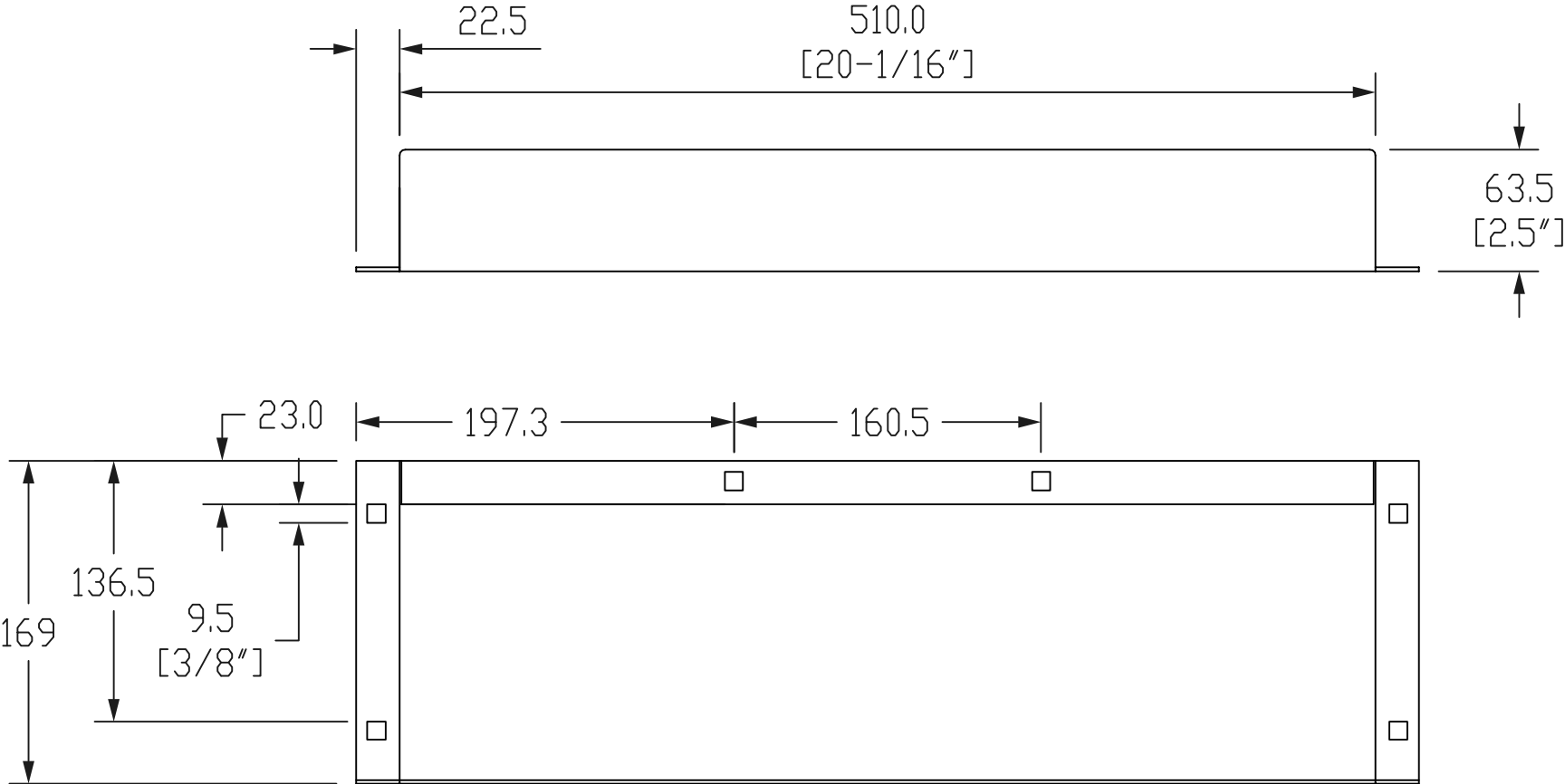
		3rd ANGLE PROJ	THIS DRAWING IS THE PROPERTY OF MIDULUS AMPLIFICATION AND MUST NOT BE REPRODUCED OR LOANED WITHOUT WRITTEN PERMISSION	
TITLE BAFFLE ASSEMBLY BLUESBREAKER STYLE COMBO CAB			DRAWN BY - M.MORTIMER DATE - 20/11/08	
MATERIAL	SEE DETAILS		BB45-2	ISSUE: 01X


CHASSIS CUT OUT FOR TREM AMPS WOULD BE ~500 WIDE TO ACCOMADATE THE ADDITIONAL TWO CONTROLS.

THE AIR VENT WOULD ALSO BE 80MM WIDER.



		3rd ANGLE PROJ	THIS DRAWING IS THE PROPERTY OF MODULUS AMPLIFICATION AND MUST NOT BE REPRODUCED OR LOANED WITHOUT WRITTEN PERMISSION	
TITLE		CABINET ASSY BLUESBREAKER COMBO	DRAWN BY DATE	- M.MORTIMER - 20/11/08
MATERIAL	SEE DETAILS	BB45-3	ISSUE	01X



		3rd ANGLE PROJ 	THIS DRAWING IS THE PROPERTY OF MODULUS AMPLIFICATION AND MUST NOT BE REPRODUCED OR LOANED WITHOUT WRITTEN PERMISSION	
TITLE CHASSIS BLUESBREAKER COMBO			DRAWN BY DATE	- M.MORTIMER - 20/11/08
MATERIAL	SEE DETAILS	DRAWING No. BB45-4		ISSUE 01X